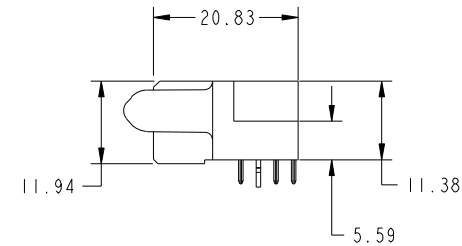
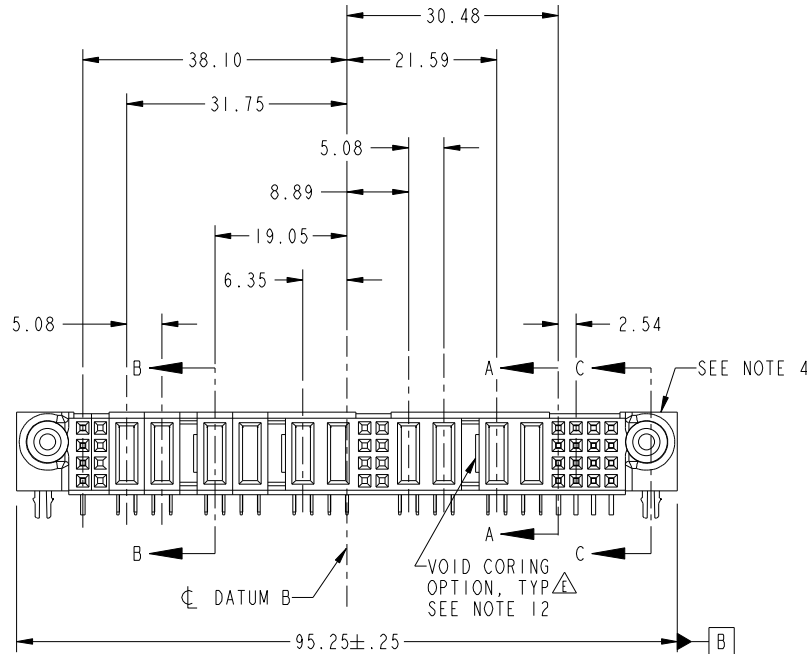


Tous droits strictement réservés. Reproduction ou communication a des tiers interdite sous quelque forme que ce soit sans autorisation écrite du propriétaire. Propriété de c FCI. Droits de reproduction FCI.



All rights strictly reserved. Reproduction or issue to third parties in any form whatever is not permitted without written authority from the proprietor. Property of FCI. Copyright FCI.

PRODUCT NO.	ROWS		SIG	POWER						SIG	POWER						SIG	
51915-011-- NOTE: 3	D C B A	E2	8 7	P10	P9	P8	P7	P6	P5	6 5	P4	P3	P2	P1	4 3	2 1	E1	
			H G F E	X X X X	PC	PC	PC	PC	PA	PA	X X X X	PC	PC	PC	PC	H H H H		
			F E								X X X X					G G G G		
			X X X X								X X X X					F F F F		
			E E E E								X X X X					E E E E		



CODE	DIM "M" MATING LENGTH	CONTACT TYPE
E	[N/A]	SIGNAL
F	[N/A]	SIGNAL
G	[N/A]	SIGNAL
H	[N/A]	SIGNAL
PA	[1.07]	POWER
PC	[2.34]	POWER
HA	[N/A]	HOLD-DOWN
X	OMITTED	OMITTED

mat'l code				SEE NOTE		tolerances unless otherwise specified		CUSTOMER		 www.fciconnect.com	
ltr	ecn no.	dr	date	linear	0.X ±0.5		COPY		title		
A	V21136	DAI	06/27/02		0.XX ±0.25		projection		16S + 4P + 8S + 6P + 8S R/A SPECIAL RECEPTACLE w/ GUIDE PIN		
B	V21422	CGD	09/03/02	angles	0.XXX ±0.10		 MIM		product family PwrBlade code 213		
C	V03-0112	TAB	01/24/03		0° ±2°		scale		size dwg no 51915-011 sheet 1 of 4		
D	DG05-0200	SJ	06/30/05	dr	D. INGRAM	06/27/02	1:1		A		
E	DG07-0498	JW	09/15/08	enr	J. ALLISON	06/27/02					
				chr	J. ALLISON	06/27/02					
				appd	J. ALLISON	06/27/02					
sheet index	revision sheet	E 1	E 2	E 3	E 4					cage code 22526	

Pro/E

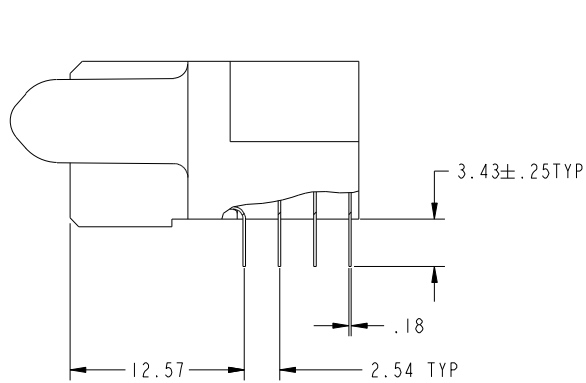
cage code 22526

Tous droits strictement reserves. Reproduction ou communication a des tiers interdite sous quelque forme que ce soit sans autorisation ecrite du proprietaire. Propriete de c FCI. Droits de reproduction FCI.

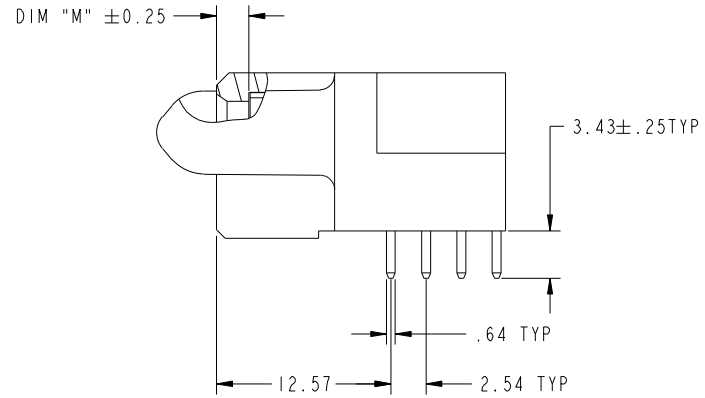


All rights strictly reserved. Reproduction or issue to third parties in any form whatever is not permitted without written authority from the proprietor. Property of FCI. Copyright FCI.

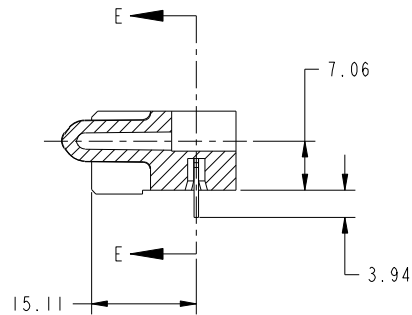
PRODUCT NUMBER
51915-011--
NOTE: 3



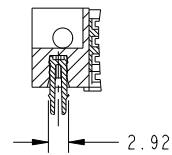
BROKEN-OUT SECTION A-A
SCALE 2:1



BROKEN-OUT SECTION B-B
SCALE 2:1



SECTION C-C



PARTIAL SECTION E-E

mat'l code		SEE NOTE		tolerances unless otherwise specified		CUSTOMER		 www.fciconnect.com	
ltr	ecn no.	dr	date	linear	0.X ±0.5	COPY		title	
E					0.XX ±0.25	projection		16S + 4P + 8S + 6P + 8S R/A SPECIAL RECEPTACLE w/ GUIDE PIN	
				angles	0.XXX ±0.10			product family PwrBlade code	
				dr	0° ±2°			size	
				enr	D. INGRAM 06/27/02	scale		dwg no	
				chr	J. ALLISON 06/27/02	1:1		A 51915-011	
				appd	J. ALLISON 06/27/02			sheet	
sheet index		revision sheet						2	
								2	

cage code 22526

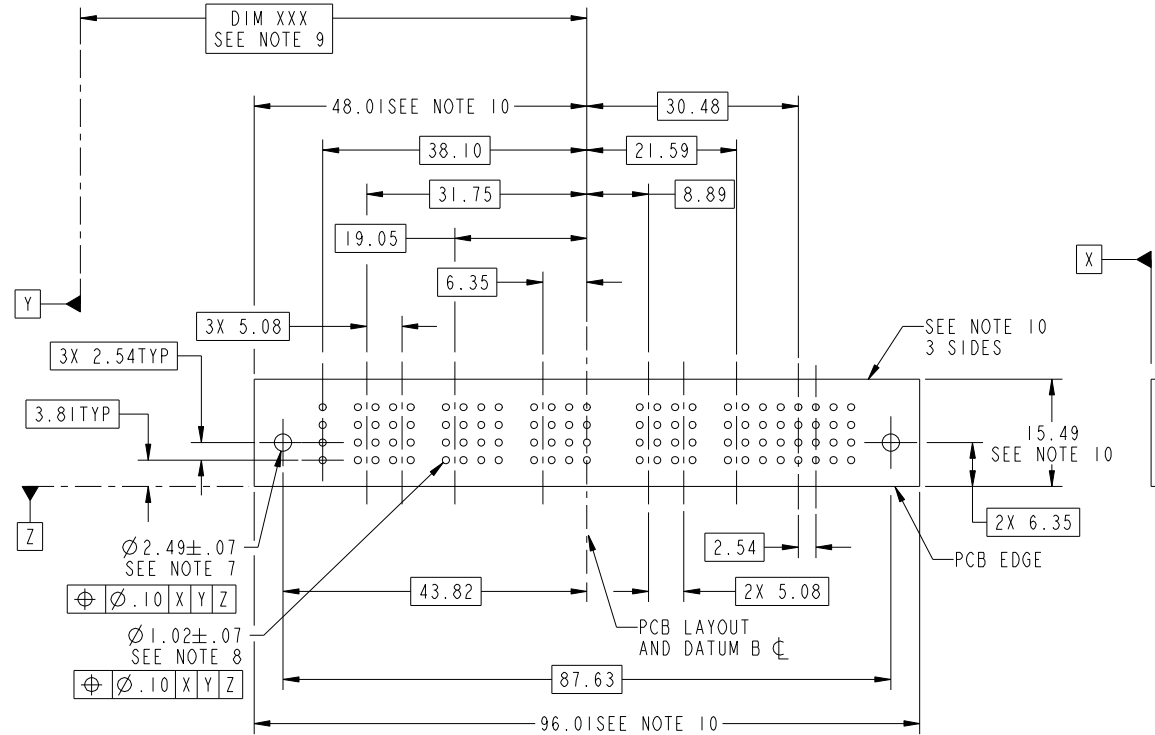
Pro/E

Tous droits strictement reserves. Reproduction ou communication a des tiers interdite sous quelque forme que ce soit sans autorisation écrite du propriétaire. Propriete de c FCI. Droits de reproduction FCI.



All rights strictly reserved. Reproduction or issue to third parties in any form whatever is not permitted without written authority from the proprietor. Property of FCI. Copyright FCI.

PRODUCT NUMBER
51915-011--
NOTE: 3



mat'l code		SEE NOTE		tolerances unless otherwise specified		CUSTOMER		FCI		www.fciconnect.com	
ltr	ecn no.	dr	date	linear	0.X ± 0.5	COPY		title			
E					0.XX ± 0.25	projection		16S + 4P + 8S + 6P + 8S			
				angles	0.XXX ± 0.10			R/A SPECIAL RECEPTACLE w/ GUIDE PIN			
				dr	0 ± 2°			product family		PwrBlade	code
				enr	D. INGRAM 06/27/02	scale		size		dwg no	213
				chr	J. ALLISON 06/27/02	1:1		A		51915-011	sheet
				appd	J. ALLISON 06/27/02						3
sheet index		revision sheet									

cage code 22526

Pro/E

Tous droits strictement reserves. Reproduction ou communication a des tiers interdite sous quelque forme que ce soit sans autorisation écrite du propriétaire. Propriete de c FCI. Droits de reproduction FCI.



All rights strictly reserved. Reproduction or issue to third parties in any form whatever is not permitted without written authority from the proprietor. Property of FCI. Copyright FCI.

PRODUCT NUMBER
51915-011--
NOTE: 3

NOTES:

1. DIMENSIONS AND TOLERANCES ARE IN ACCORDANCE WITH ASME Y14.5M, 1994 UNLESS OTHERWISE SPECIFIED.

CONNECTOR NOTES:

2. HOUSING MATERIAL: UL 94 V-0 GLASS FILLED HIGH-TEMP THERMOPLASTIC
POWER CONTACT MATERIAL: COPPER ALLOY
SIGNAL PIN MATERIAL: COPPER ALLOY

3. PLATING:
SEE ITEM 5 & 6 IN PRINT 10064183 FOR PLATING SPEC OF 51915-011; 51915-011LF RESPECTIVELY

4. MANUFACTURER'S NAME, P/N, AND DATE CODE TO APPEAR ON THIS SURFACE.

5. PRODUCT SPECIFICATION GS-12-149.
APPLICATION SPECIFICATION BUS-20-067.

PCB NOTES:

6. ALL HOLE DIAMETERS ARE FINISHED HOLE SIZE.

7. MOUNTING HOLES, WHERE APPLICABLE, ARE UNPLATED.

8. $\varnothing 1.151 \pm 0.025$ DRILLED HOLES PLATED WITH 0.008 MIN SnPb OR Sn OVER 0.03 TO 0.08 Cu PLATING TO ACHIEVE $\varnothing 1.02 \pm .07$ HOLE.

9. "DIM XXX" TO BE DETERMINED BY THE CUSTOMER.

10. CONNECTOR KEEP-OUT ZONE.

11. A \triangle SYMBOL WILL BE NEXT TO ANY DIMENSION, VIEW, OR NOTE WHICH HAS BEEN MODIFIED WITH THE CURRENT DRAWING REVISION.

12. THE VOID CORING IN BETWEEN POWER MODULES, SIGNAL MODULES AND END MODULES ARE OPTIONAL AND THE SHAPE MAY BE DIFFERENT FOR OPTIMIZING THE MOLDING PROCESS. THE VOID CORING WILL NOT EFFECT TO PRODUCT FUNCTION.

mat'l code				SEE NOTE		tolerances unless otherwise specified		CUSTOMER		www.fciconnect.com	
ltr	ecr no.	dr	date	linear	0.X ± 0.5		COPY			title	
E					0.XX ± 0.25		projection			16S + 4P + 8S + 6P + 8S R/A SPECIAL RECEPTACLE w/ GUIDE PIN	
					0.XXX ± 0.10					product family PwrBlade code 213	
				angles	0° + 2°		scale		size A		
				dr	D. INGRAM	06/27/02	1:1		dwg no 51915-011		
				enr	J. ALLISON	06/27/02			sheet 4		
				chr	J. ALLISON	06/27/02					
				appd	J. ALLISON	06/27/02					
sheet index	revision sheet										

cage code 22526

Pro/E